



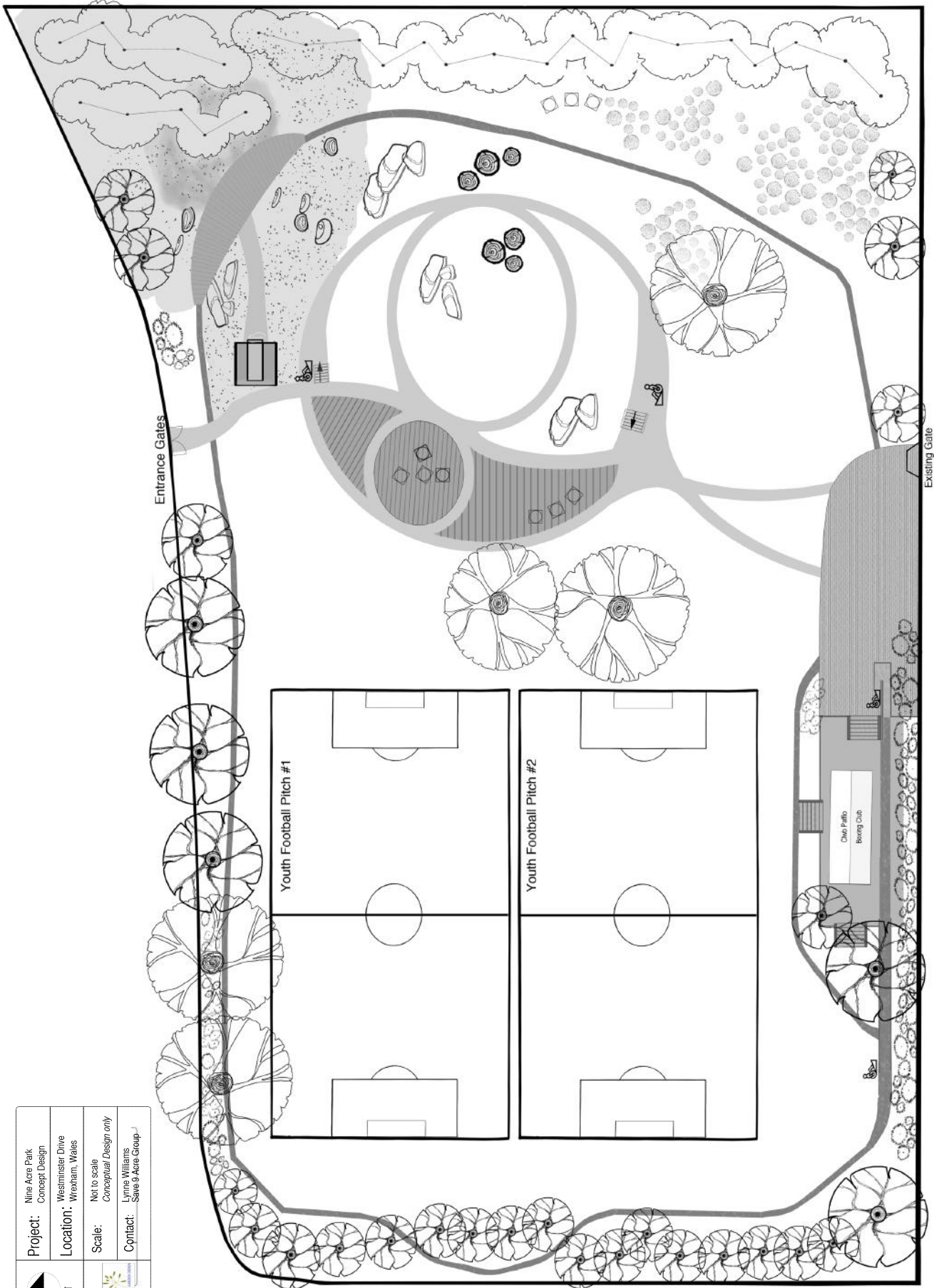
Nine Acre Public Park Design Concept

*by Lynne Williams
for the 9 Acre Campaign
and the Community*



Nine Acre Field, Chester Road, Wrexham, Wales

	Project: Nine Acre Park Concept Design
	Location: Westminster Drive Wrexham, Wales
Scale: Not to scale Conceptual Design only	Contact: Lynne Williams Save 9 Acre Group



Introduction



Dear Friends and Neighbours,

The fight to save Nine Acre Field from any kind of development is still ongoing. Wrexham Council is slowly moving ahead with its plans to build on the field. We remain firm in our well founded opposition to their plans and are bolstered by the strong support from our community.

We have had the opportunity to develop a second design concept for our park. We have taken into consideration a lot of the community feedback regarding your preferences taken from the survey many of you answered in 2020. The latest iteration of the park is more of an evolution than a departure from the first plan. We have tried our best to balance a play space for sports, a natural play area for children, a scooter park with adjoining boundary pathway, a water feature for play and for nature with open site-lines to enhance security.

In many ways our park will be similar to Bellevue Park. While it is smaller in scale, we plan to retain fencing and gates around the site and intend to have the park gates locked up from dusk to dawn.

Design is a process, so there may be changes along the way. But I hope you can see the spirit of the park as we intend. This is a space for all of us in Acton, Rhosddu and beyond. What we envision is children riding little bikes, kids and teens on the pitch, family members watching and enjoying the day. We also hope to see a diverse representation of our community, which includes the people who live in the nearby care home or hospice. We believe a transformation of the field will give us not only a place to play, relax and enjoy nature, but a place to connect with our community. A place to feed our souls.

Best regards,
Lynne Williams

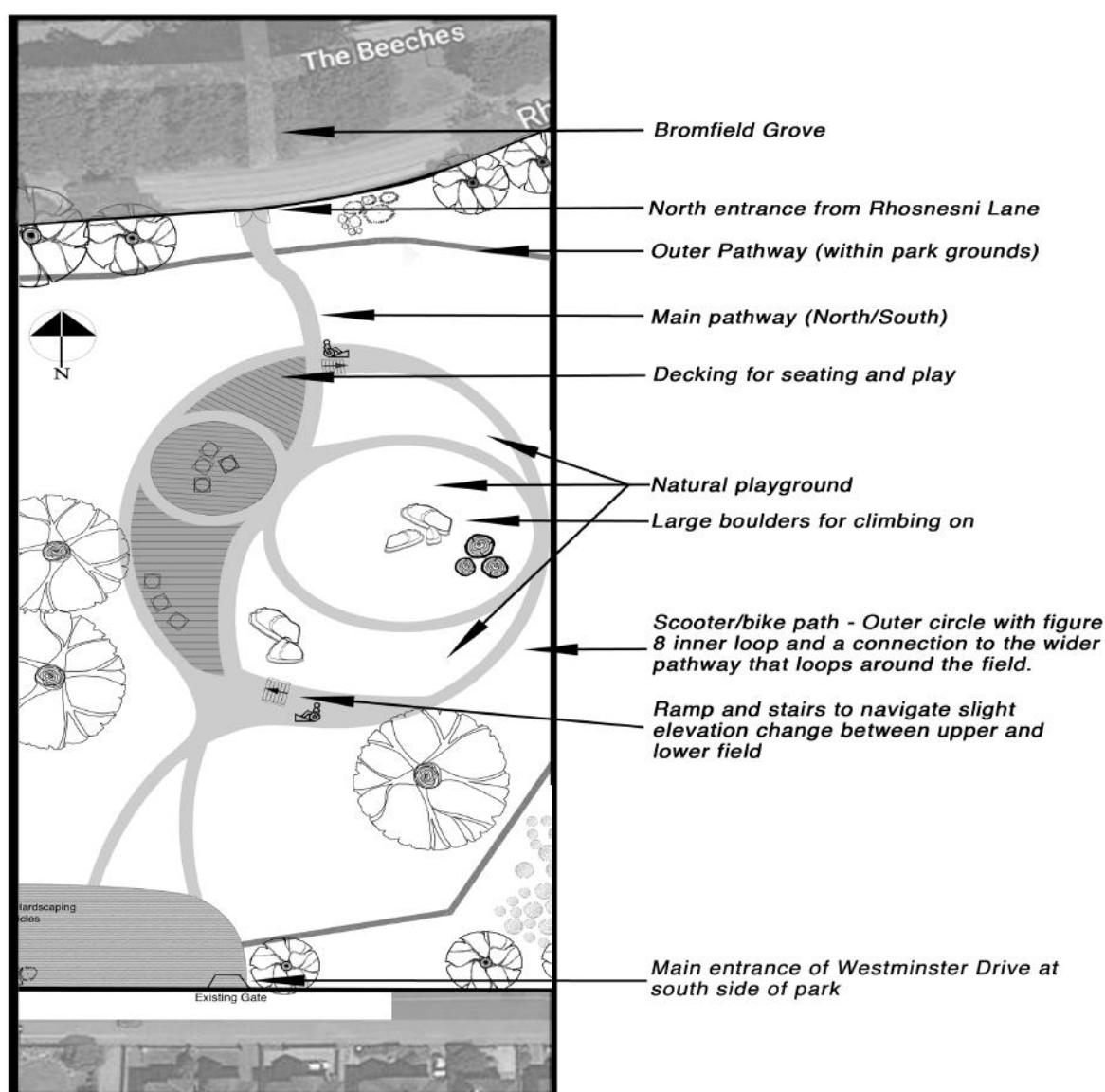


Please note:

As this is a conceptual design it is not to scale.

Central Area of Park

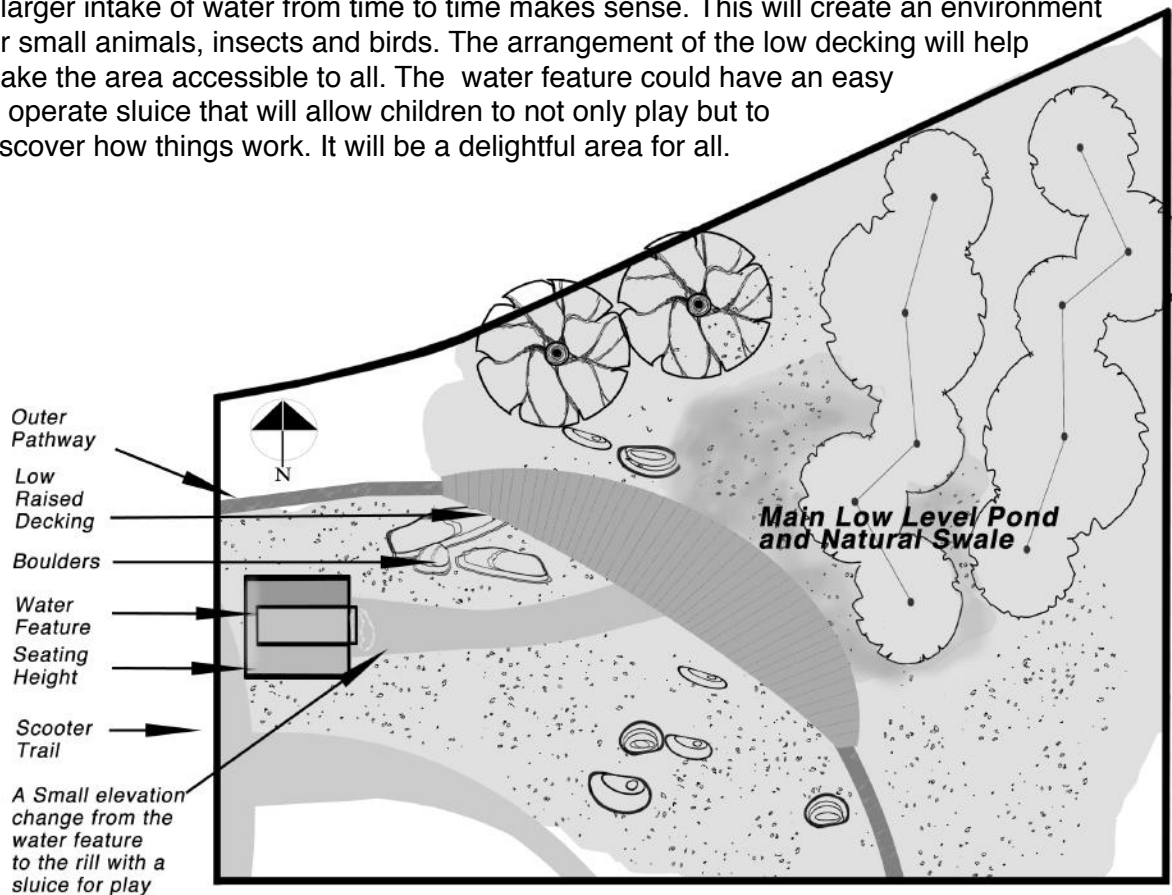
The main play and circulation area is roughly in line with the gates on the Westminster Drive side of the field. The play area will be located in the central area of the park in order to keep the space feeling open and safe. The clear line of sight for many of the homes that encircle the park should deter anti-social behaviour.



Water Feature

Localised surface water flooding is an issue on Nine Acre field and the adjacent streets. The importance of retaining the amount of permeable surface that we have in our area cannot be underestimated. Managing seasonal surface water runoff is a key element of environmental sustainability.

According to Natural Resources Wales flood risk map, the area to the north of the field is prone to surface water flooding. It is for this reason that we hope to locate a natural swale in this corner to manage the heavier seasonal rains. By placing a low level splash pond that can accommodate a larger intake of water from time to time makes sense. This will create an environment for small animals, insects and birds. The arrangement of the low decking will help make the area accessible to all. The water feature could have an easy to operate sluice that will allow children to not only play but to discover how things work. It will be a delightful area for all.



A key element in the new park will be natural play features. Materials used will include stone, gravel and wood. The visual impact of the park will be subtle without the usual bright colours associated with children's play areas.

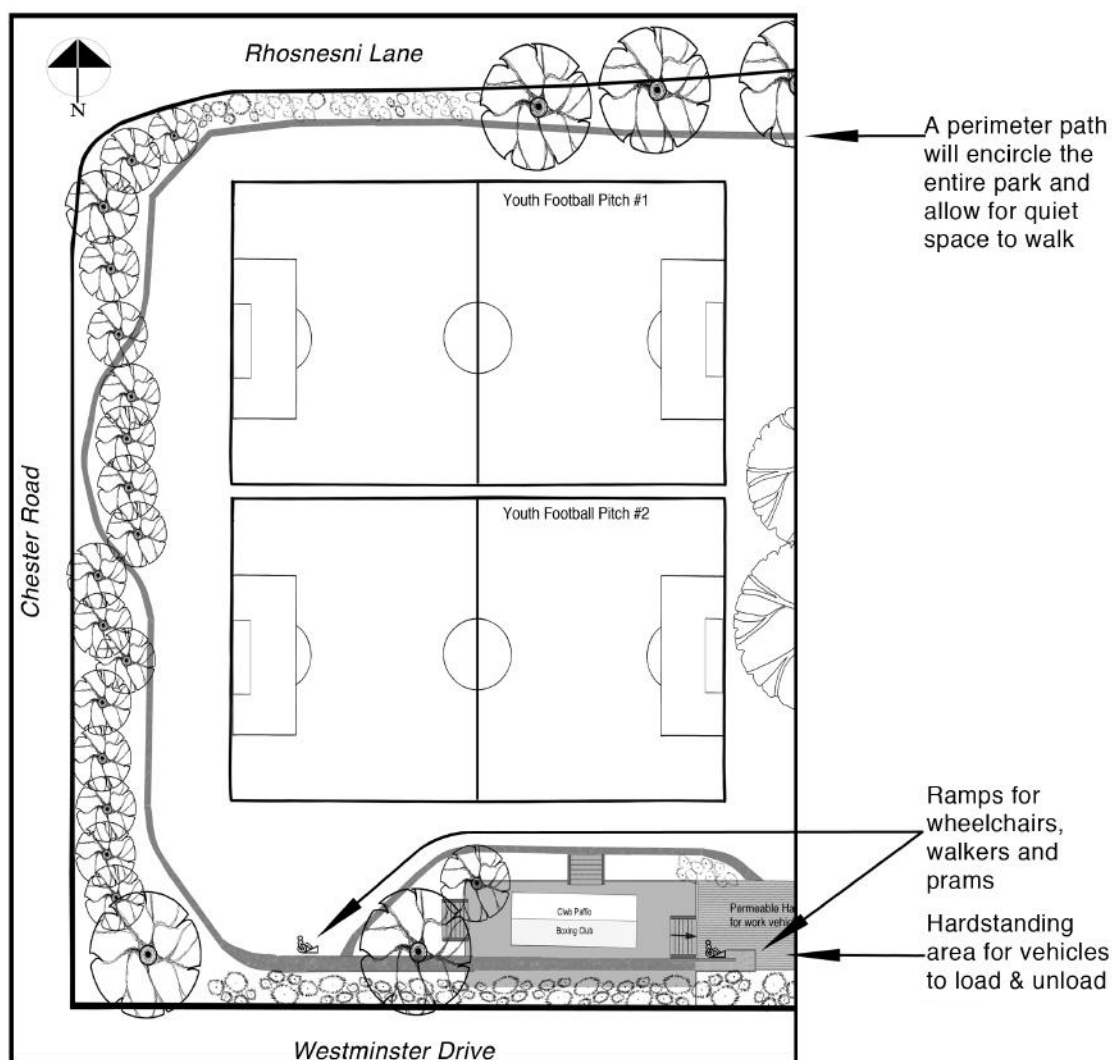
Water is one sensory element for not only the sound, but for the touch as well.

Much inspiration has come from the children's garden and play area at Kew Gardens (pictured on the left).

Youth Football Pitch & The Pavilion

Nine Acre Field has a long history as a sports pitch. Our aim with this new design is to respect the fundamental nature of the park, while including the existing pavilion within the grounds. The pavilion has served as a boxing club for a good number of years and is viewed as an asset to this community. We would like it to stay within the site, as opposed to being fenced off, because the grounds can provide a safe place for the children to run around the park for a warm up.

We believe there is enough room to accommodate two youth football pitches on the west side of the field. A proper technical study should confirm whether or not this is feasible.

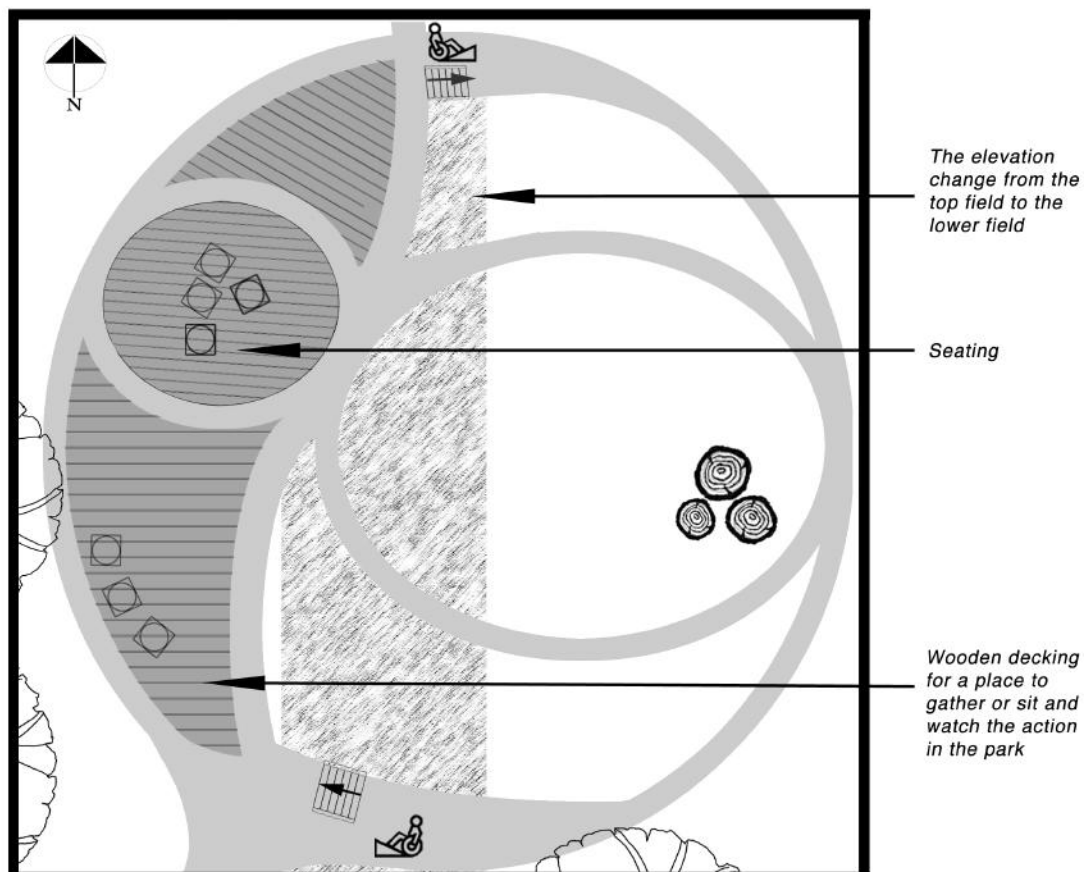


Scooter Park & Natural Playground

The “scooter” path and natural playground is central to the design theme of the park. To encourage use of the park throughout the day we need a variety of amenities that appeal to a wider range of residents.

The path design is intended to be inclusive, to be used by children and adults with or without mobility issues. Our paths should be wide enough that people using walking frames or wheelchairs will be able to easily use the space along side small children on their bikes.

The wooden platforms will have numerous seating plinths for people to sit on. We will be mindful to install park furniture that can be easier for our elderly to sit on as well as ones for the little children.



The circular “scooter” path will take advantage of the slight elevation change. By adding a little slope to the pathway we can offer a little more fun and provide an area for developing a skill of navigating little hills.

The circular path also intersects with the main path and the outer pathway. So that people have the option of a small walk or to wander the breadth of the field.

Scooter Park Designed for Little People. What & Why?

Our plan uses a modified version of the kinds of scooter parks typically found in countries such as Australia. Here we plan a subtle pathway intended for all to use.

Typically the smallest in our community arrive at a park with their parents or carers. Inviting more families into the park during the day increases the sense of safety. In turn we hope to see more people of all ages enjoy this lovely environment.



**SHOULD CHILDREN PLAY
INSIDE THE PARK WHERE IT IS
SAFE TO RIDE A BIKE OR A
SCOOTER, OR SHOULD WE ONLY
GIVE THEM THE PAVEMENT TO
PLAY ON?**

Right:
An example of a scooter park. We envision something more subtle than this without the road marking.



Left:
Adding simple material such as overturned logs, boulders and hollowed out trees provide an opportunity for a more natural type of social play. The simplicity of the design is where magic happens as children have more room to use their imaginations.

Hedgerows, Native Planting & an Annual Meadow

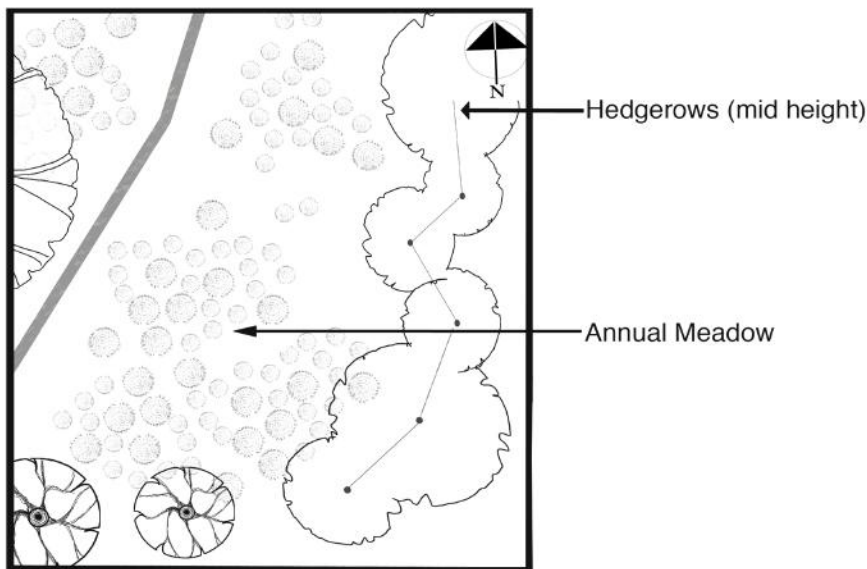
A DELIGHT FOR THE SENSES AND A LITTLE SOMETHING TO GIVE BACK TO NATURE

We intrinsically understand the value of green space by how we feel when we spend time within it. So much of the land around us is paved or built upon that it presents a challenge for nature to co-exist with us. Bringing back plants that can support more birds, insects and small mammals will not only balance the natural world, but it will increase our health and sense of well-being.

While football pitches and fields are great for sports, grass is a monoculture that lacks the kind of diversity needed to support our local wildlife. By planting a hedgerow along the eastern side of the park we can not only buffer neighbours from the park but we can provide a home for small creatures.

A careful selection of native plants will be considered. We need the right plants that are well adapted to the local environmental conditions. We're also keen to bring in plants that encourage bees and butterflies. Careful selection of the plants will mean we can pay attention to the scent, the texture and year round appeal.

We hope to sow a wildflower meadow as another important habitat for bees who need our help more today than ever.



South east corner of Nine Acre Park



About Us:

We are a group of individuals who live near Nine Acre Field. We recognise that Nine Acre is a valuable green space for all members in our community. This includes Maesydre, Rhossdu, Garden Village, Acton, Rhosnesni, Borras and beyond.

We also fully support Wrexham's AFC and put this concept forward as a succession plan once they find a larger and better training ground.

What can you do?

Stay in touch with us through our website and Facebook group. We will let you know if Wrexham Council will proceed with their plan to build on Nine Acre Field.

If you can let your friends and neighbours know that we are still very much on the case.

If you know people who aren't online or don't use social media why not print them a copy of this PDF.

FOR MORE
INFORMATION
LOOK FOR US
WWW.9ACRE.ORG
OR
ON FACEBOOK
9ACRE-WREXHAM